

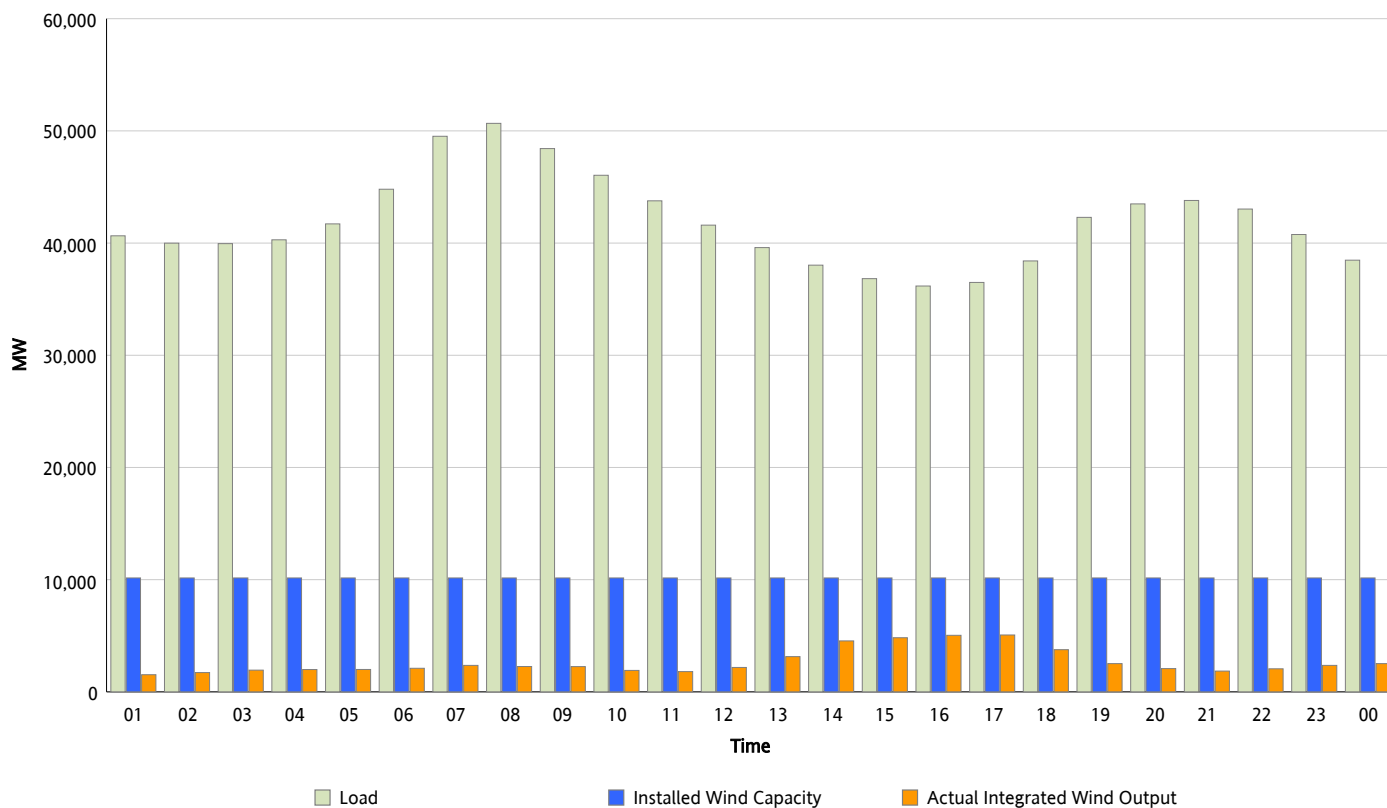


ERCOT Grid Operations

Wind Integration Report : 01/16/2013

Peak Load	50,668 MW
Load Peak Hour (HE)	08
Wind Over Peak	2,260 MW
Wind Record 12/25/12	8,638 MW
Max Wind Value*	5,231 MW
Wind Peak Time	16:25
Wind Integration %	14.35 %

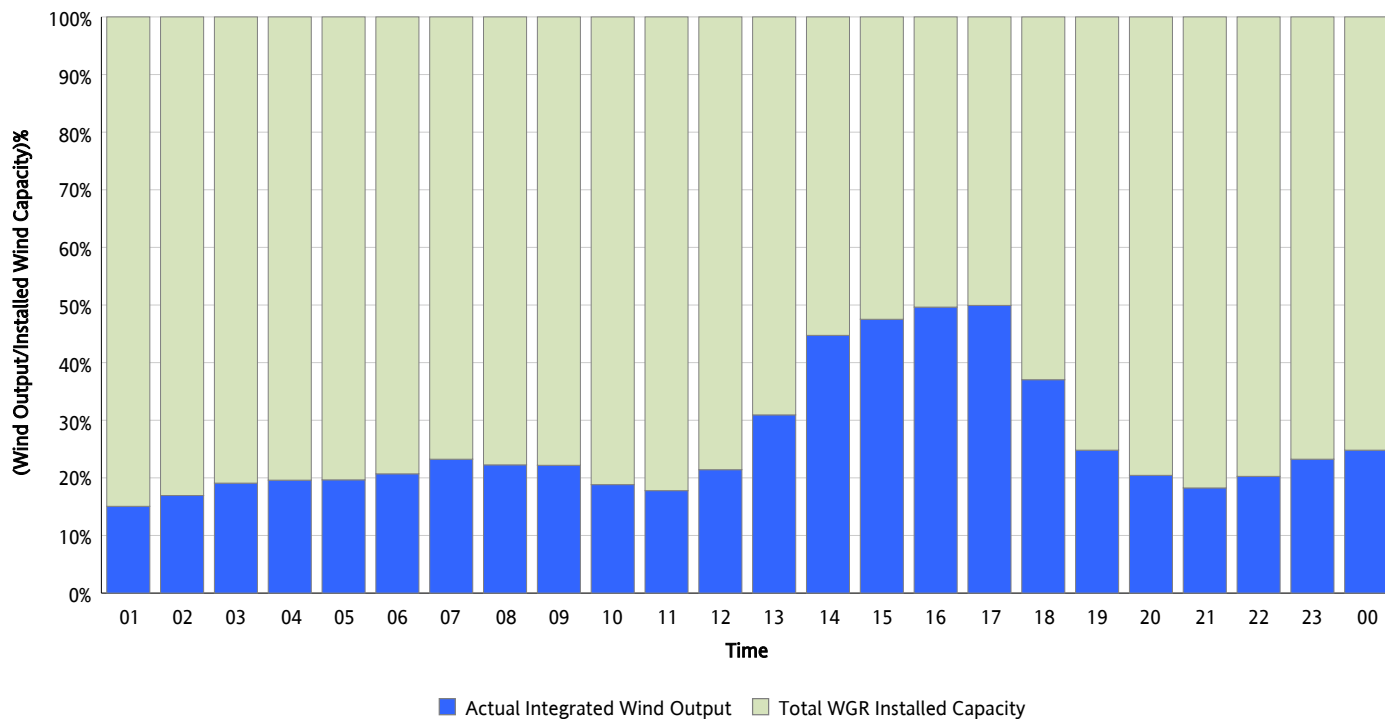
Hourly Average Actual Load vs. Actual Wind Output
01/16/2013



** Wind Record and Wind Max represent instantaneous values and the rest of the values are integrated over the hour*

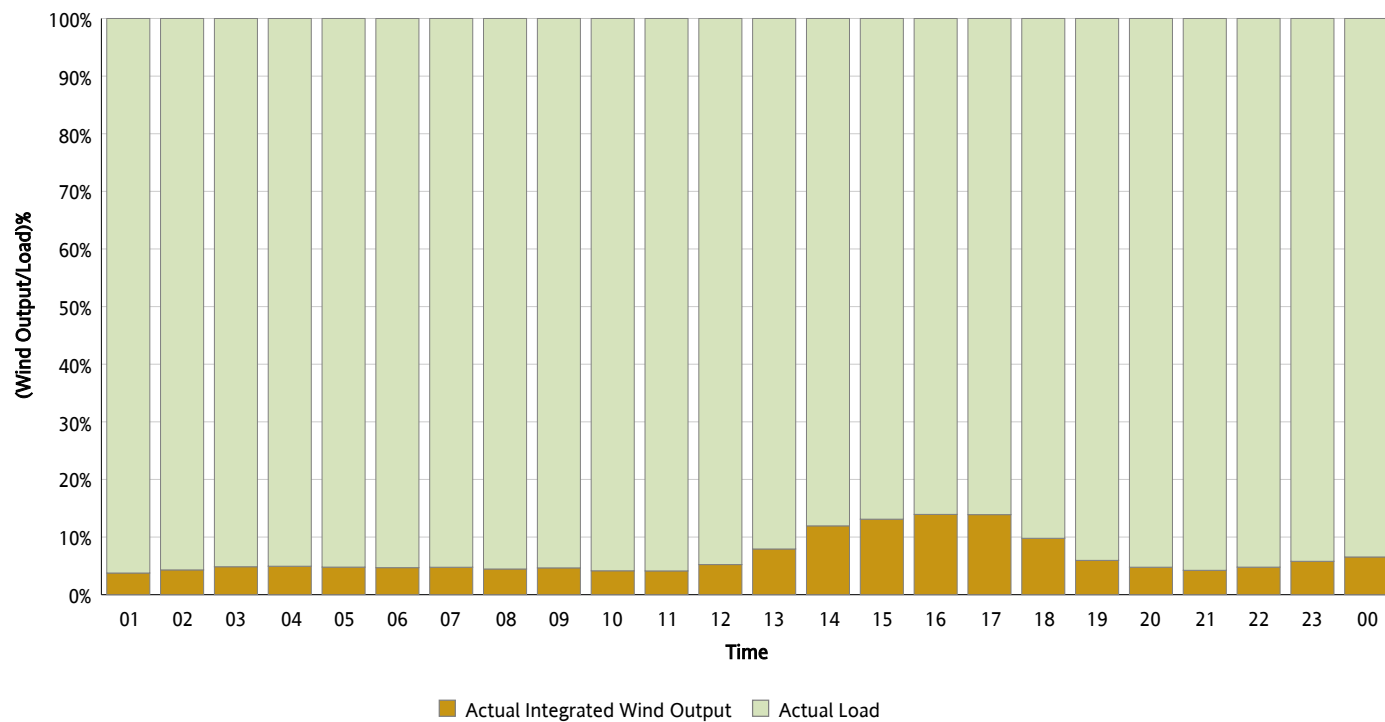
Actual Wind Output as a Percentage of the Total Installed Wind Capacity

01/16/2013



Actual Wind Output as a Percentage of the ERCOT Load

01/16/2013



ERCOT Load vs. Actual Wind Output

01/09/2013 - 01/16/2013

